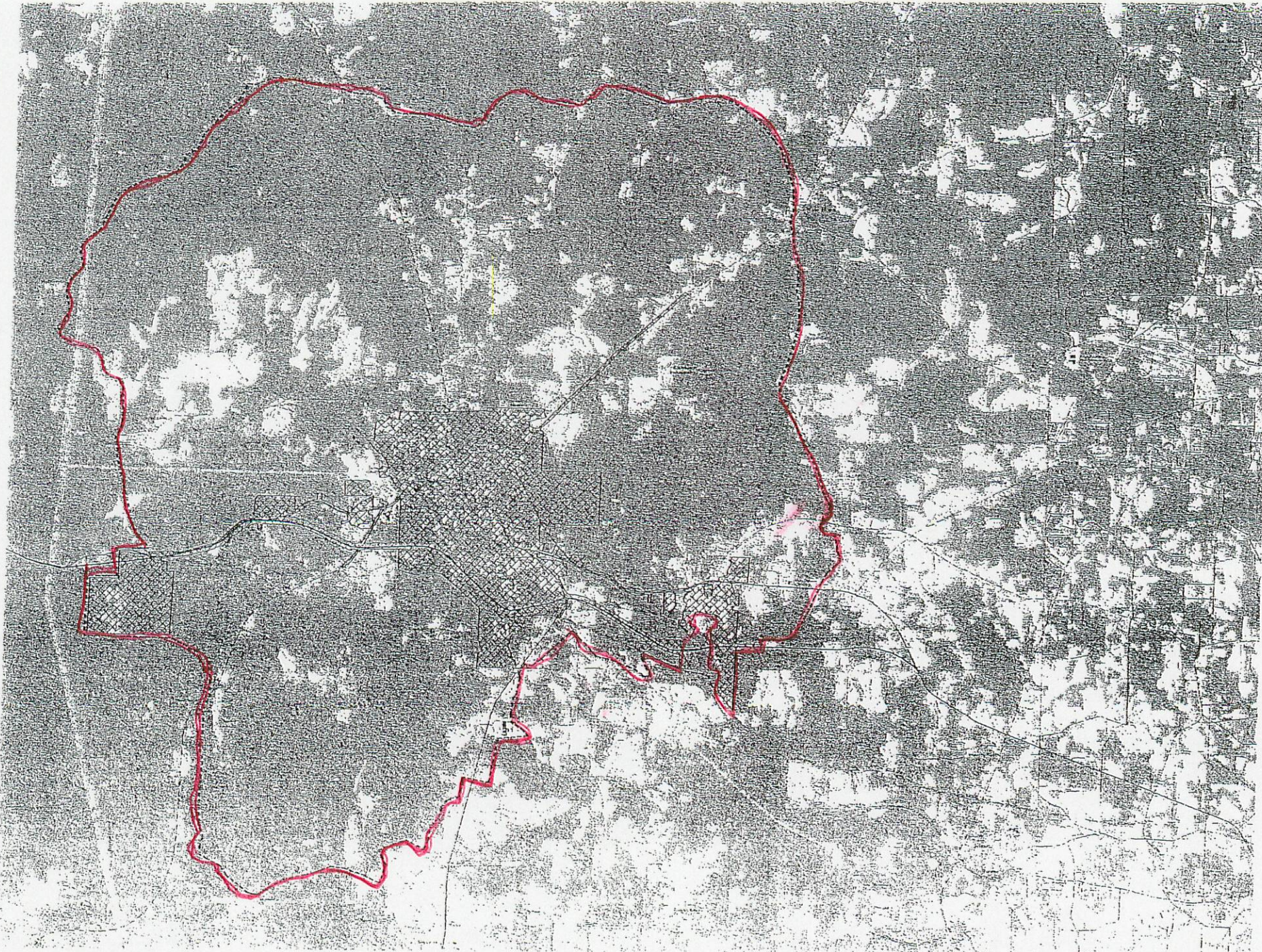



Additional Detail Provided by D.C.A.



**PAULDING COUNTY
&
CITY OF DALLAS
SEWER DISTRICT MAP**

LEGEND

----- CITY OF DALLAS SEWER SERVICE AREA

 DALLAS CITY LIMITS

INTERMEDIATE PROPERTIES

1. MUNICIPALITY IN WHOSE DISTRICT THE MAJORITY OF A GIVEN PROPERTY RESIDES WILL PROVIDE SERVICE TO THAT GIVEN PROPERTY.
2. MUNICIPALITY WHOSE DISTRICT IS IN CLOSEST PROXIMITY TO A GIVEN PROPERTY WILL PROVIDE SERVICE TO THAT GIVEN PROPERTY.



JERRY SHEARIN, CHAIRMAN
PAULDING COUNTY
BOARD OF COMMISSIONERS

BOYD AUSTIN, MAYOR
CITY OF DALLAS

APPROVED

APPROVAL DATE

APPROVAL DATE

FEBRUARY 1, 2001

N.T.S.