

Georgia Coastal Comprehensive Plan Development Scenarios

Development Scenarios

- **Scenario 1:**

- ✓ Projection of existing conditions

- **Scenario 2:**

- ✓ Projection of existing conditions within the framework of existing ordinances

- **Scenario 3:**

- ✓ Projection of growth based on quality growth principles



Development Scenarios: Methodology

- **Scenario 1**

- ✓ Trend projection based on approved developments, accepted population projections and developable land available

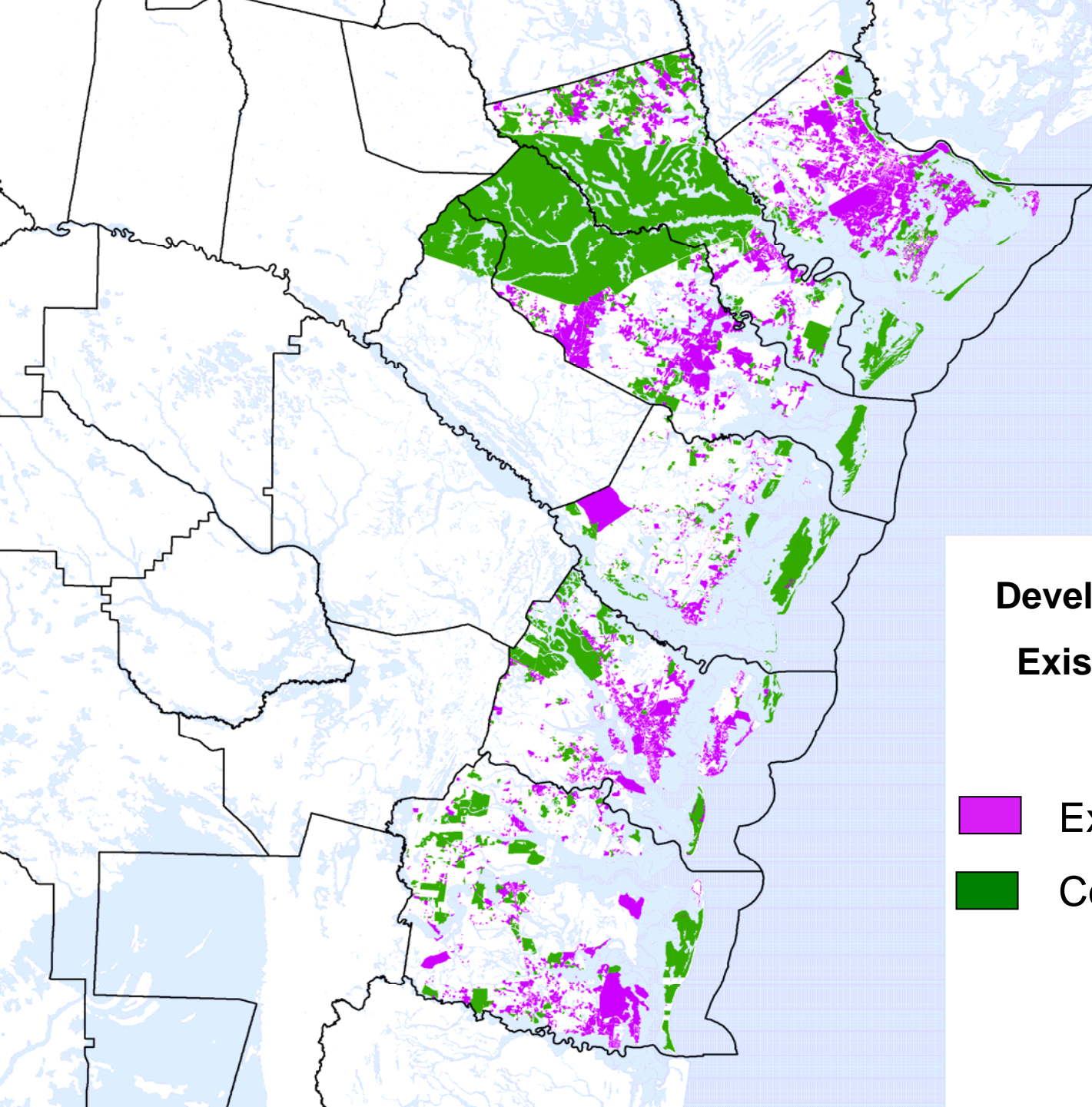
- **Scenario 2**

- ✓ Trend projection based on existing ordinances and approved plans, approved developments, accepted population projections and developable land available

- **Scenario 3**

- ✓ Projection based on quality growth principles and accepted population projections



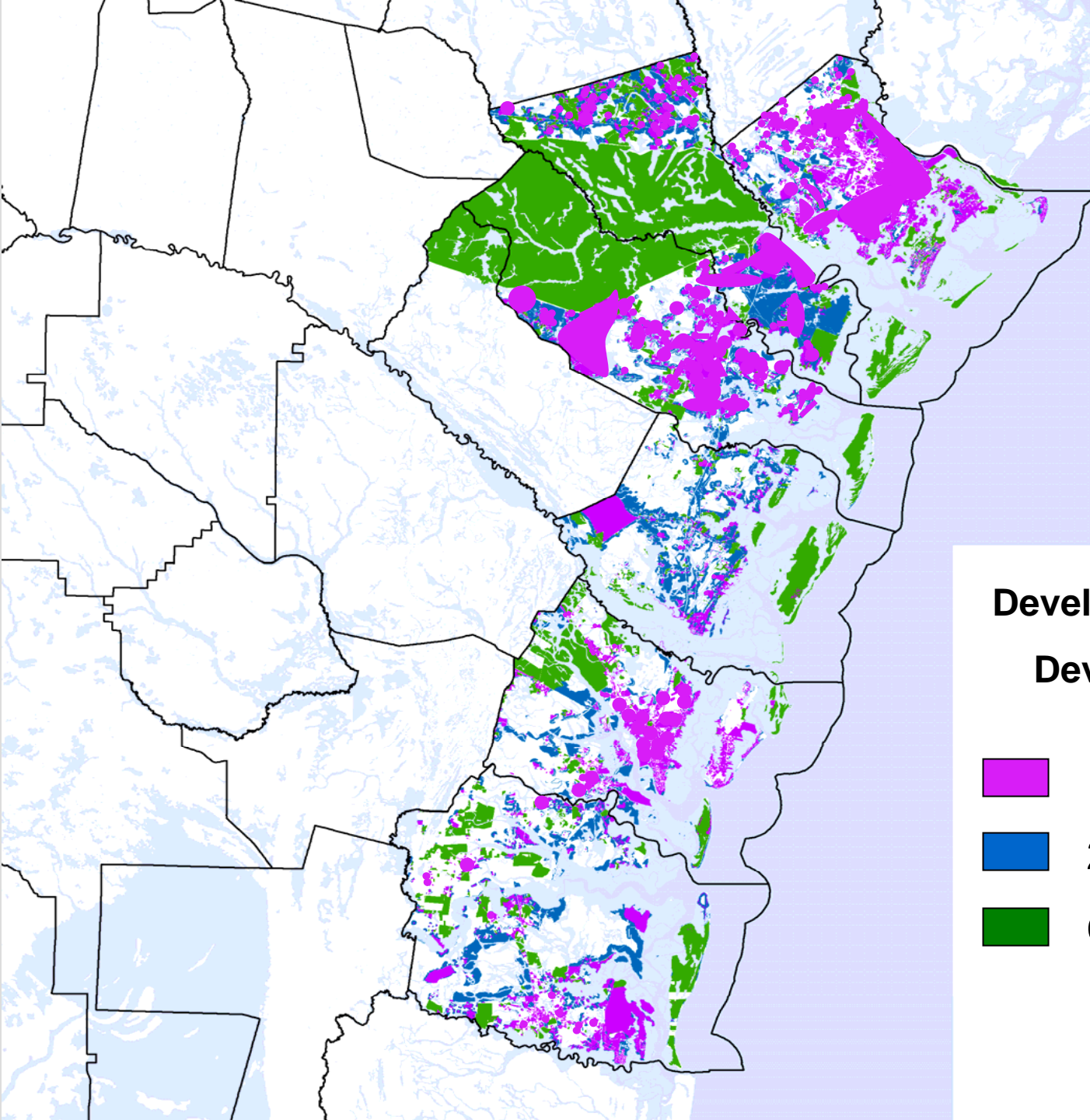


Development Scenario 1
Existing Development




-  Existing
-  Conservation

Draft



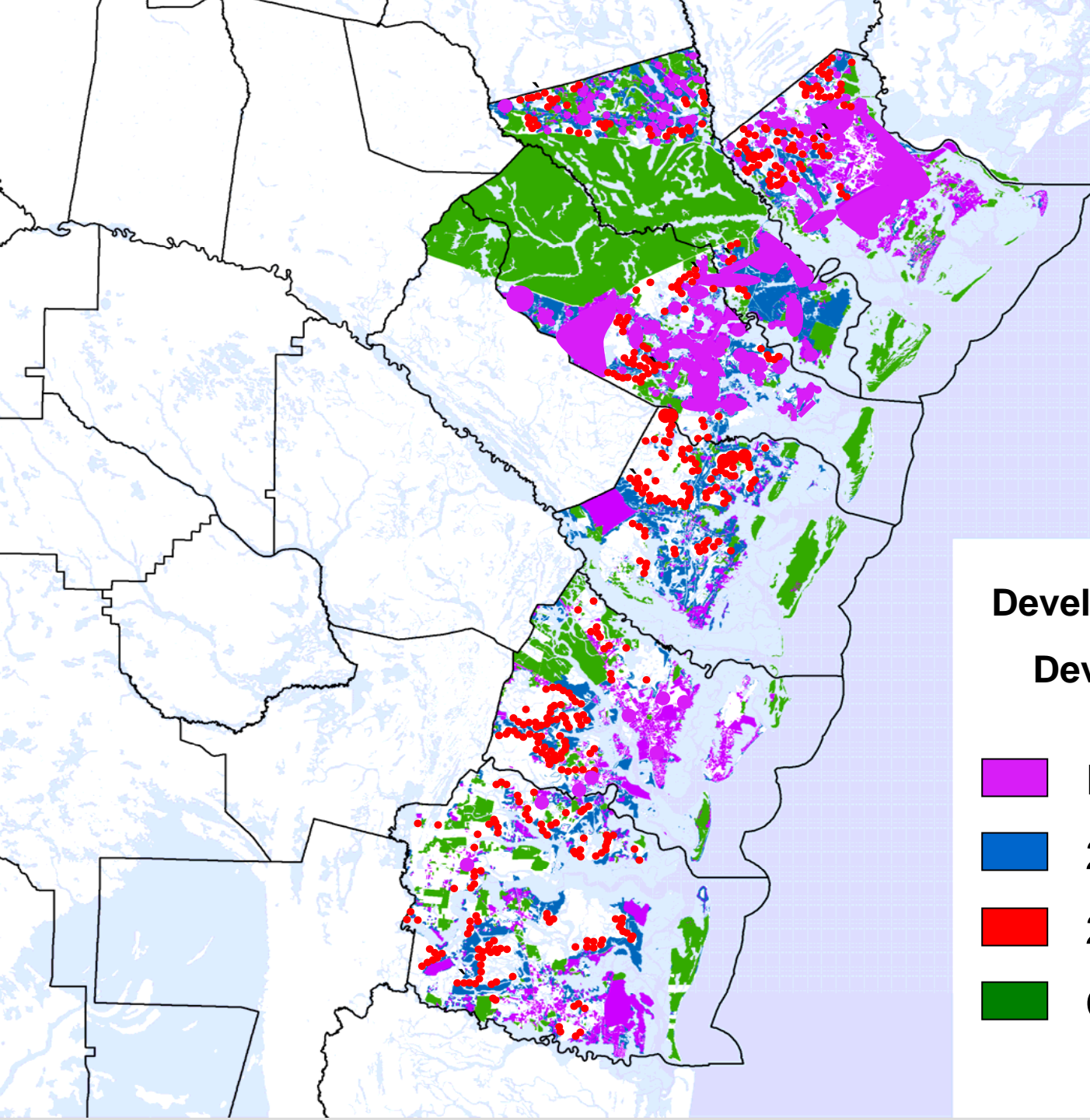


Development Scenario 1
Development - 2015





-  Existing
-  2015
-  Conservation

Draft



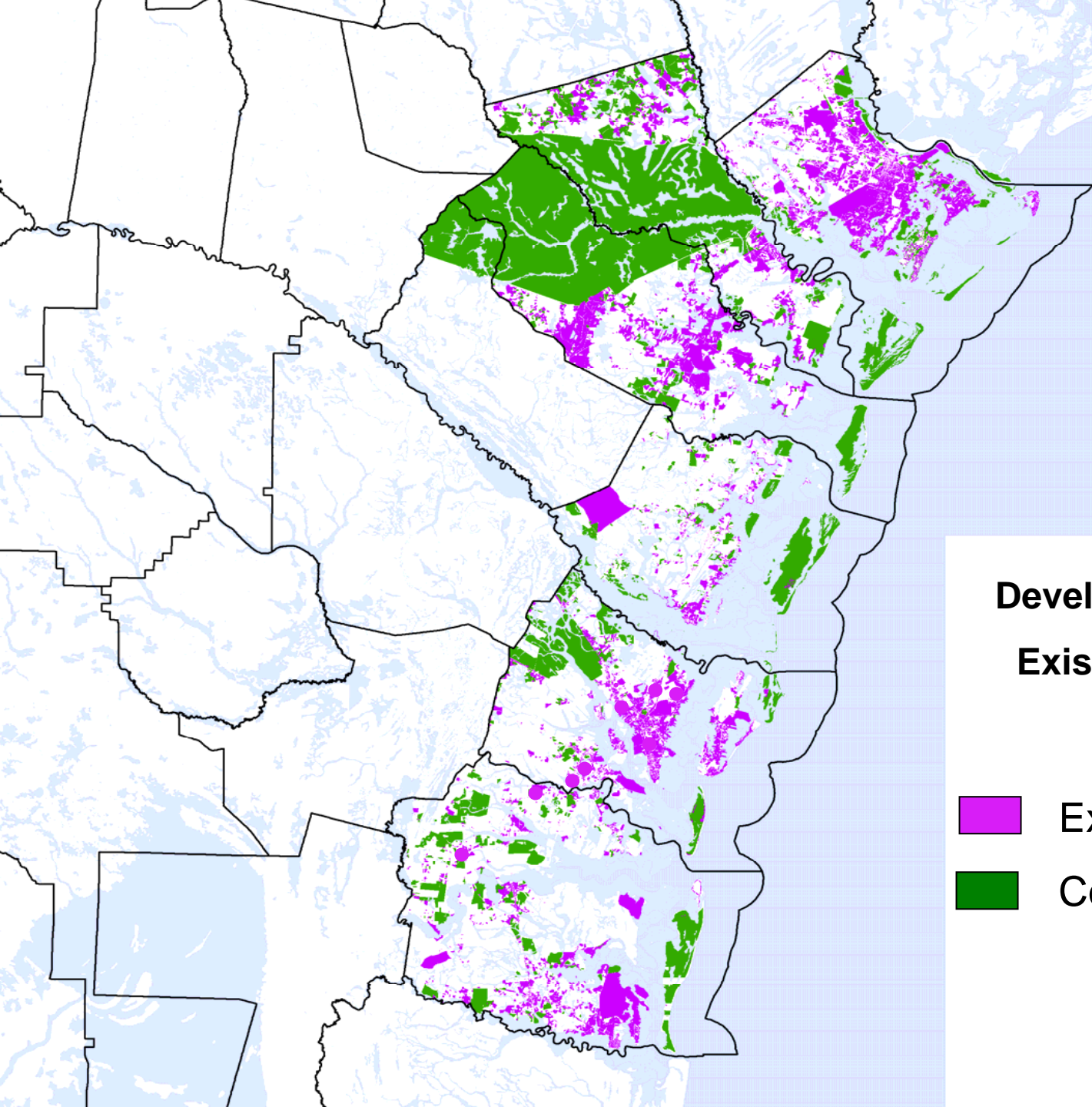


Development Scenario 1 Development - 2030

-  Existing
-  2015
-  2030
-  Conservation

Draft



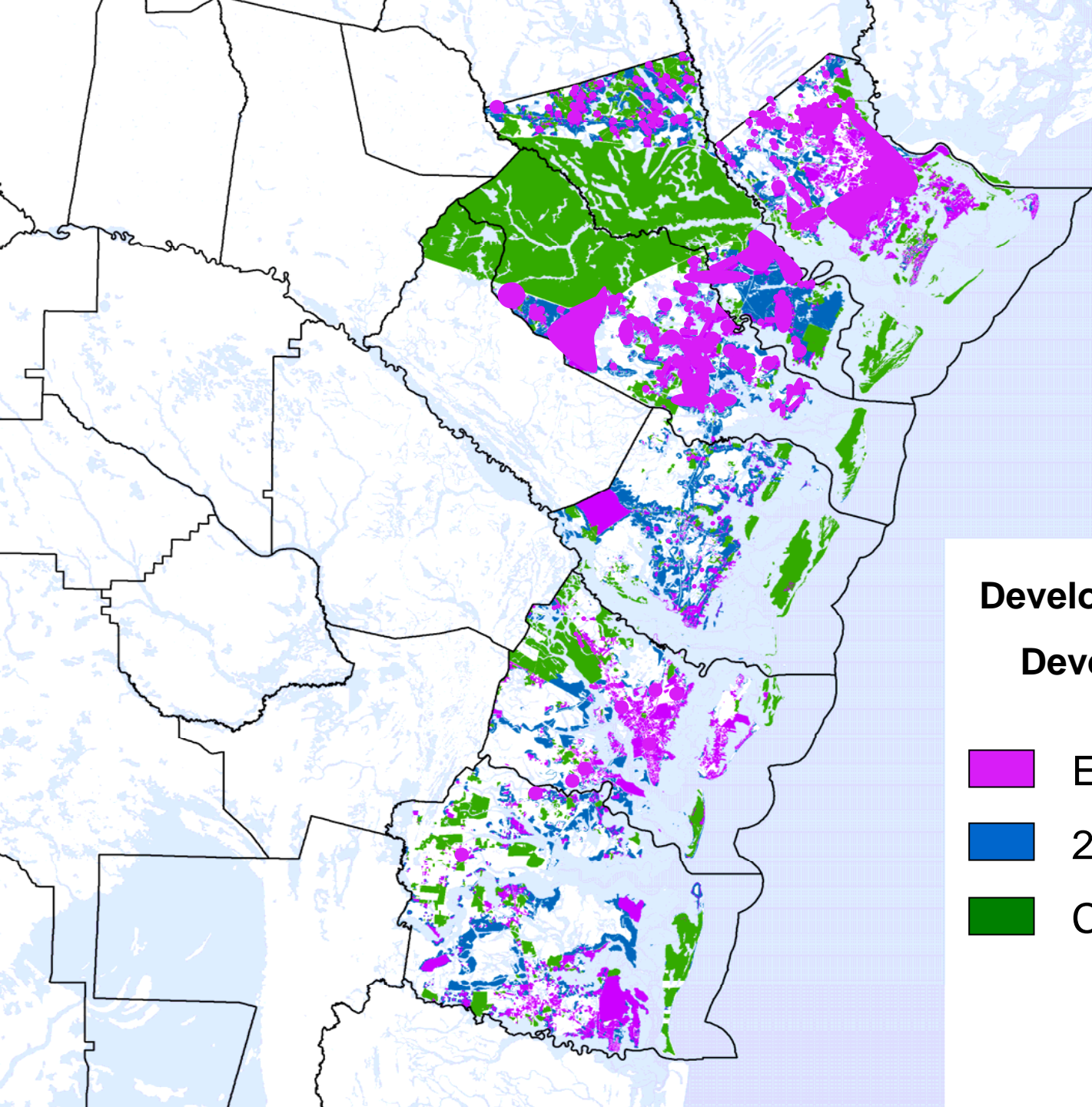


Development Scenario 2
Existing Development

-  Existing
-  Conservation




Draft





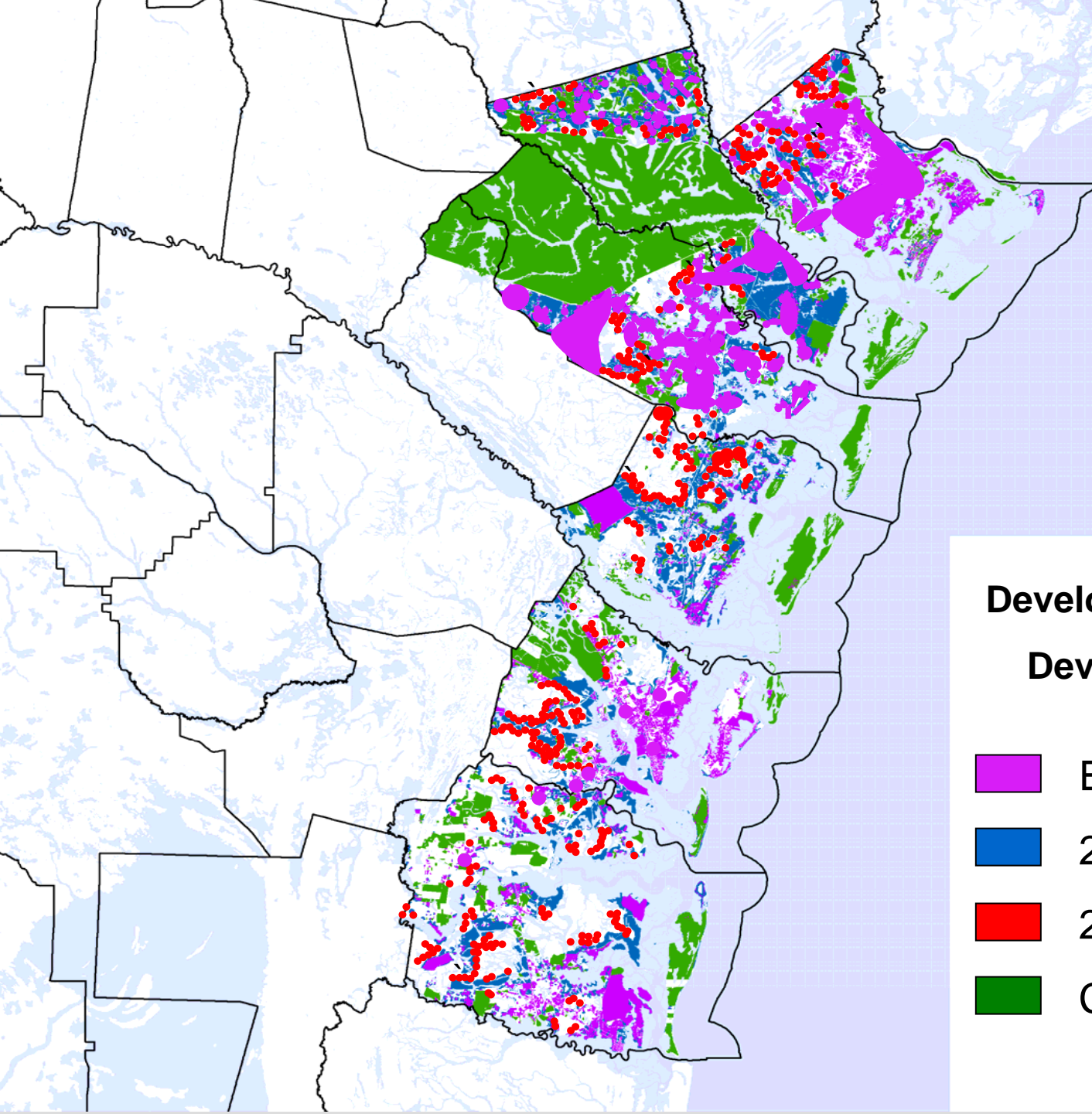
Development Scenario 2

Development - 2015

-  Existing
-  2015
-  Conservation





Draft





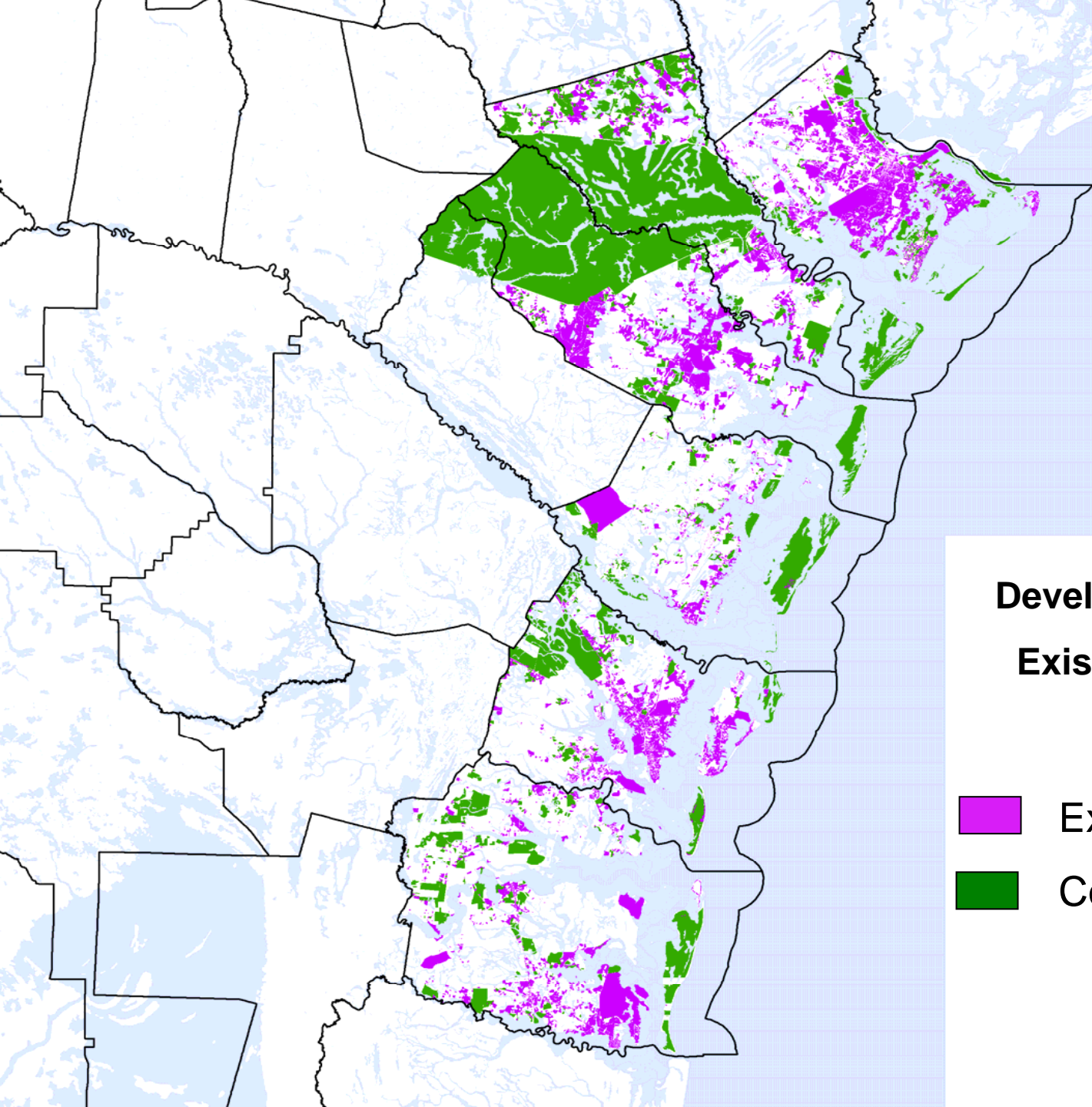
Development Scenario 2

Development - 2030

-  Existing
-  2015
-  2030
-  Conservation

Draft



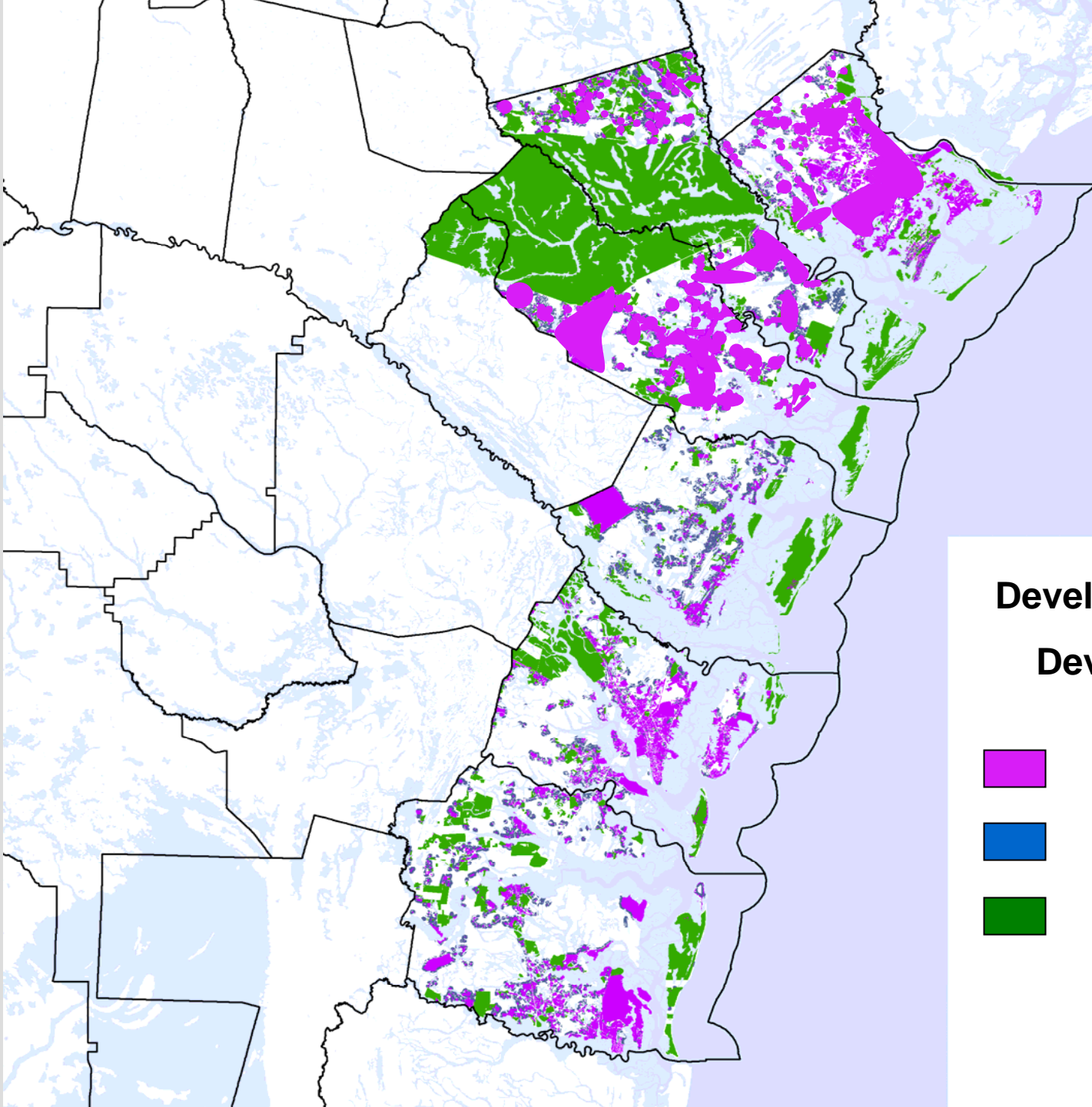


Development Scenario 3
Existing Development

-  Existing
-  Conservation




Draft





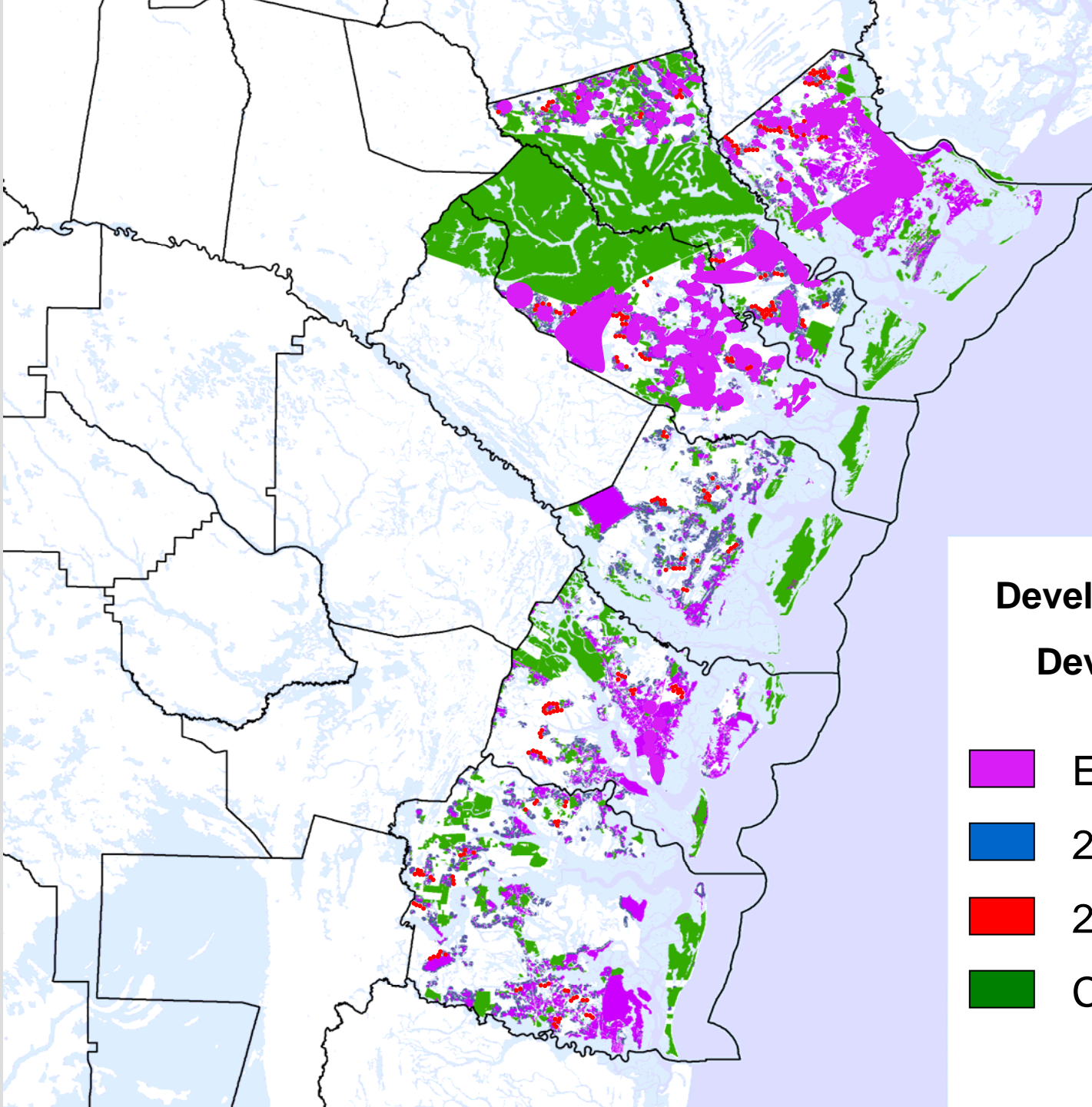
Development Scenario 3

Development - 2015

-  Existing
-  2015
-  Conservation





Draft





Development Scenario 3

Development - 2030

-  Existing
-  2015
-  2030
-  Conservation

Draft

